

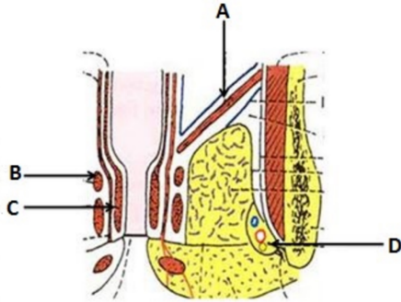


INICET Mini GT- 4 (PYQ based)

Time: 45mins

Marks: 50

[1]: Identify the pelvic diaphragm in the picture given below.



Option 1:

A

Option 2:

B

Option 3:

C

Option 4:

D

[2]: Inferior thyroid artery is the branch of which of the following?

Option 1:

External carotid artery

Option 2:

Internal carotid artery

Option 3:

Thyrocervical trunk

Option 4:

Lingual artery

[3]: Which of the following sensations is not perceived by the spinal nucleus of the trigeminal nerve?

Option 1:

Temperature

Option 2:

Pain

Option 3:

Touch

Option 4:

Proprioception

[4]: Which of the following nerves is not involved in olfaction?

Option 1:

Trigeminal nerve

Option 2:

Vagus nerve

Option 3:

Glossopharyngeal nerve

Option 4:

Hypoglossal nerve

[5]: Which of the following is the diluting segment of the kidney?

Option 1:

PCT

Option 2:

Collecting duct

Option 3:

Ascending thick loop of Henle

Option 4:

Descending loop of Henle

[6]: Myosin head detaches from actin by which of the following mechanism?

Option 1:

Binding of ATP

Option 2:

Entry of calcium into sarcoplasmic reticulum

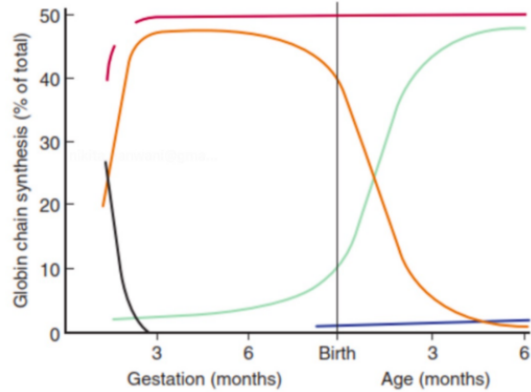
Option 3:

Change in troponin C configuration

Option 4:

Release of ADP and Pi

[7]: Which of the following curves represents gamma-globin chain production?



Option 1:

Green Curve

Option 2:

Black Curve

Option 3:

Blue Curve

Option 4:

Orange curve

[8]: Which of the following events occur immediately when a person changes his/her posture from supine to standing?

Option 1:

Decrease in firing from baroreceptor

Option 2:

Vagal output to cardiac fibres increase

Option 3:

Mesenteric Vasoconstriction

Option 4:

Increase cardiac contractility

[9]: Which of the following enzymes are involved in gluconeogenesis?

A. Pyruvate carboxylase

B. Phosphoenol pyruvate kinase

C. Hexokinase

D. Pyruvate kinase

E. Glucose 6 phosphatase

Option 1:

A,B,and E only

Option 2:

B and C only

Option 3:

A and E only

Option 4:

A, B and C only

[10]: Which of the following methods can detect the alterations in DNA sequence?

1. Restriction fragment length analysis
2. Flow cytometry
3. Pyrosequencing
4. FISH

Option 1:

1 and 3

Option 2:

1, 2, and 3

Option 3:

2, 3, and 4

Option 4:

1, 2, and 4

[11]: Refsum disease is due to:

Option 1:

Absence of alpha oxidation in peroxisomes

Option 2:

Absence of beta oxidation in peroxisomes

Option 3:

Absence of alpha oxidation in lysosomes

Option 4:

Absence of beta oxidation in lysosomes

[12]: What would happen to the half-life and plasma concentration of a drug which follows first-order kinetics, if the dose is doubled?

Option 1:

Half-life doubles and plasma concentration remains the same

Option 2:

Half-life remains the same and plasma concentration doubles

Option 3:

Half-life and plasma concentration remains the same

Option 4:

Half life and plasma concentration doubles

[13]: Which of the following is the incorrect statement regarding clomiphene citrate?

GnRH - Gonadotropin-releasing hormone

Option 1:

Causes monofollicular development

Option 2:

Inhibits negative feedback on GnRH

Option 3:

Causes endometrial thinning

Option 4:

Can be used with gonadotropin

[14]: All of the following are the uses of enteric-coated drugs except:

Option 1:

Protect the acid labile drug from gastric acidity

Option 2:

Protect the gastric mucosa from irritant effects of certain drugs

Option 3:

Prolongs the half life of the drug

Option 4:

Deliver drugs distal to stomach

[15]: The response on stimulation of muscarinic receptor is:

Option 1:

Erection

Option 2:

Ejaculation

Option 3:

Bronchodilation

Option 4:

Increased myocardial contractility

[16]: Match the following bacteria with the drug of choice used for each.

A. Bacteroides

B. MRSA

C. Hemophilus

D. Klebsiella

1. Vancomycin

2. Metronidazole

3. Meropenem 4. Penicillin

Option 1:

A-1, B-3, C-4, D-2

Option 2:

A-2, B-1, C-4, D-3

Option 3:

A-3, B-4, C-1, D-2

Option 4:

A-4, B-1, C-2, D-3

[17]: Which of the following staphylococcal infections is not toxin mediated?

Option 1:

Food poisoning

Option 2:

Toxic shock syndrome

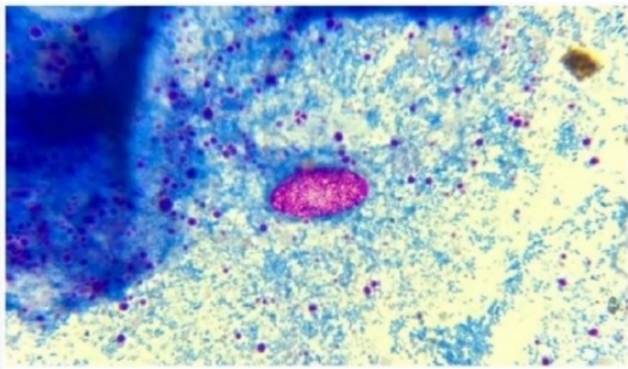
Option 3:

Septicemia

Option 4:

Staphylococcal scalded skin syndrome

[18]: A kinyoun positive oocyst (25 μm) was isolated from an HIV patient with diarrhea. Identify the organism.



Option 1:

Cystoisospora

Option 2:

Cyclospora

Option 3:

Cryptosporidium

Option 4:

Microspora

[19]: Solvent/Detergent (S(D) plasma destroys lipid-enveloped viruses. So, on SD plasma transfusion, which of the following infection is likely to occur?

Option 1:

Human Immunodeficiency Virus (HIV)

Option 2:

Hepatitis A Virus (HAV)

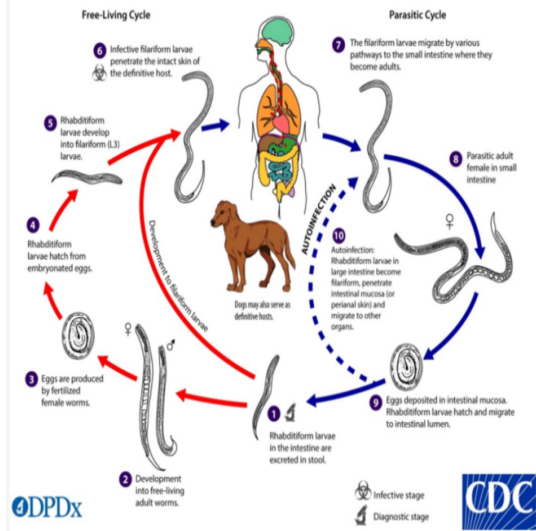
Option 3:

Hepatitis B Virus (HBV)

Option 4:

Hepatitis C Virus (HCV)

[20]: Identify the helminth from the life cycle given below.



Option 1:

Ancylostoma duodenale

Option 2:

Strongyloides stercoralis

Option 3:

Ascaris lumbricoides

Option 4:

Enterobius vermicularis

[21]: A 32 year old female with history of back ache and polyarthralgia was investigated and found to have nucleolar pattern in IF. Which of the following is the best fit in her case?

Option 1:

Raynaud phenomenon and sclerodactyly

Option 2:

Genital and oral painful ulcers

Option 3:

Glomerulonephritis and heart failure

Option 4:

Joint pains with nodules on skin

[22]: Choose the correct option regarding the storage temperatures of blood components.

Option 1:

RBC 20-22°C, Platelet 2-6°C, FFP -30°C

Option 2:

RBC 2-6°C, Platelet 20-22°C, FFP -30°C

Option 3:

RBC -30°C, FFP 2-6 °C, Platelet 20-22°C

Option 4:

RBC 20-22°C, FFP below -30°C, Platelet 2-6 °C

[23]: Which of the following is not usually involved in the immunohistochemistry of acute lymphoblastic leukemia?

Option 1:

Tdt

Option 2:

CD1a

Option 3:

CD3

Option 4:

Cytokeratine

[24]: All the following cause widening of confidence interval except?

Option 1:

Increase in sample size

Option 2:

Decrease in sample size

Option 3:

Increase in variability

Option 4:

Increase in confidence level

[25]: Match the following STI kit colors and their use:

- | | |
|-------------------------------|------------------|
| A. Lower abdominal pain | 1. Grey, Kit 1 |
| B. Urethral discharge | 2. Green, Kit 2 |
| C. Non herpetic genital ulcer | 3. White, Kit 3 |
| D. Vaginal discharge | 4. Yellow, Kit 6 |

Option 1:

A-4, B-3, C-2, D-1

Option 2:

A-4, B-1, C-3, D-2

Option 3:

A-1, B-4, C-3, D-2

Option 4:

A-3, B-2, C-4, D-1

[26]: Compared to a pregnant female, a lactating female would require a higher level of nutrient supplementation for which of the following?

Option 1:

Vitamin A

Option 2:

Calcium

Option 3:

Iron

Option 4:

Folic acid

[27]: All the following tests are related to pasteurization of milk except

Option 1:

Phosphatase test

Option 2:

Iodine test

Option 3:

Standard plate count

Option 4:

Methylene blue reduction test

[28]: Paradoxical undressing is seen in:

Option 1:

Heat stress

Option 2:

Voyeurism

Option 3:

Hypothermia

Option 4:

LSD overdose

[29]: Identify the plant which produces a deliriant toxin.



Option 1:

Erythroxylum cocca

Option 2:

Datura

Option 3:

Hyoscine

Option 4:

Digitalis purpurea/cannabis

[30]: A 28-year-old man presented with dry mouth, urinary retention, and constipation after consuming an unknown substance. On examination, his PR - 110bpm, and his pupils were dilated. What did he most likely consume?

Option 1:

Heroin

Option 2:

Morphine

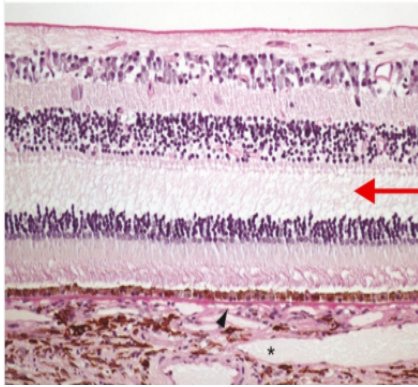
Option 3:

Malathion

Option 4:

Belladonna

[31]: Identify the structure marked with red arrow



Option 1:

Outer limiting membrane

Option 2:

Inner plexiform layer

Option 3:

Outer plexiform layer

Option 4:

Outer nuclear layer

[32]: Which of the following are the objective tests for the hearing?

1. BERA (Brainstem evoked response audiometry)
2. OAE (Otoacoustic emission)
3. PTA (Pure tone audiometry)
4. Tympanometry

Option 1:

1, 2, and 4

Option 2:

1,2, and 3

Option 3:

2,3, and 4

Option 4:

1,2,3, and 4

[33]: Cardiac output can be determined using the following except?

Option 1:

Thermal dilution technique

Option 2:

Capnography

Option 3:

Esophageal doppler

Option 4:

Echocardiography

[34]: A 23-year-old patient came with complaints of non-scarring alopecia in the vertex region of his head. Histological examination shows loss of hair with haemorrhage into the follicular areas and mild perinuclear lymphocytic infiltrate. What is the diagnosis?

Option 1:

Alopecia areata

Option 2:

Telogen effluvium

Option 3:

Tinea infection

Option 4:

Trichotillomania

[35]: A patient says that he feels that there is something wrong with him mentally and it is because of the summer season. How much would he score on the insight scale?

Option 1:

2

Option 2:

3

Option 3:

4

Option 4:

5

[36]: A 30-year-old woman presented with complaints of bone pain and abdominal cramps. Her family says she has a history of abnormal behavior. The consultant doctor arrived at a provisional diagnosis based on the clinical features. Which of the following would be the best investigation to arrive at a definitive diagnosis?

Option 1:

MRI

Option 2:

Ultrasonogram

Option 3:

Sestamibi scan

Option 4:

CT scan

[37]: Which of the following is responsible for the elevated levels of TG and VLDL in diabetes mellitus?

Option 1:

Increased activity of lipoprotein lipase and decreased activity of hormone sensitive lipase

Option 2:

Increased activity of hormone sensitive lipase and decreased lipoprotein lipase activity

Option 3:

Increase in peripheral function of LDL receptors

Option 4:

Increased in activity of hepatic lipase

[38]: Disappearance of loud S1 in mitral stenosis occurs in all except:

Option 1:

First degree heart block

Option 2:

AR

Option 3:

Calcified valve

Option 4:

Mild MS

[39]: A patient with ascites is found to have SAAG ≥ 1.1 . All the following can be the causes except

Option 1:

Cirrhosis

Option 2:

Liver failure

Option 3:

Metastasis to liver

Option 4:

TB peritonitis

[40]: A patient comes to ED with fever and headache. On examination he has neck stiffness. CSF analysis was done and it shows the following findings. Most likely diagnosis is:

Opening pressure - Increased

Proteins- Mildly increased

Glucose - Normal

Lymphocytes - Increased.

Option 1:

TB

Option 2:

Neisseria Gonorrhoea

Option 3:

Cryptococcus

Option 4:

Coxsackie

[41]: Metabolic acidosis with a normal anion gap is seen in all except

Option 1:

Proximal RTA

Option 2:

Pancreatitis

Option 3:

Severe diarrhoea

Option 4:

Salicylate poisoning

[42]: Which of the following is false regarding imaging in the primary survey of a trauma patient?

Option 1:

Hemodynamically unstable patient should not be sent for CT scan

Option 2:

All patients should have chest X-ray PA view only

Option 3:

X-ray of the pelvis is essential in primary survey

Option 4:

X-rays in primary survey must also be done in pregnant women

[43]: Which parameter is the best guide to monitor the adequacy of fluid resuscitation in a patient?

Option 1:

Central venous pressure

Option 2:

Urine output

Option 3:

Blood pressure

Option 4:

Oxygen saturation

[44]: A 25-year-old pregnant women came with a history of thyroid swelling. FNAC report was suggestive of papillary carcinoma thyroid and the nodule was "cold" on scan. Which of the following will not be a treatment option for her?

Option 1:

Total thyroidectomy

Option 2:

Total thyroidectomy plus lymph node dissection

Option 3:

Radioiodine ablation of thyroid

Option 4:

Right hemithyroidectomy

[45]: Identify the true statement regarding split skin and full- thickness skin grafts:

1. Primary contracture is more with split skin grafts
2. Secondary contracture is more with split skin grafts
3. Primary contracture is more with full-thickness grafts
4. Secondary contracture is more with full-thickness grafts

Option 1:

2,3

Option 2:

2,4

Option 3:

1,3

Option 4:

1,4

[46]: A 40-year-old woman comes with a history of postcoital bleeding and a visible mass seen in the cervix per speculum. The next step to be done:

Option 1:

Conization

Option 2:

Cryotherapy

Option 3:

Targeted biopsy

Option 4:

Pap smear

[47]: A 50-year-old alcoholic patient presents with a history of waxing and waning jaundice for the past 2 months. His CT examination reveals, dilatation of the common bile duct and pancreatic duct. What is the most probable diagnosis in this patient?

Option 1:

Cholangiocarcinoma

Option 2:

Periampullary carcinoma

Option 3:

Common bile duct stone

Option 4:

Head of pancreas carcinoma

[48]: A pregnant woman has a fetus with Down's syndrome. Triple test done at 15-16 weeks will have

Option 1:

Low MSAFP, high hCG, low UE3

Option 2:

High MSAFP, low hCG, high UE3

Option 3:

Low MSAFP, high hCG, high UE3

Option 4:

High MSAFP, low hCG, low UE3

[49]: In fetal alcohol syndrome, which of the following is not seen?

Option 1:

Thinning of corpus callosum

Option 2:

Microcephaly

Option 3:

Holoprosencephaly

Option 4:

Macrocephaly

[50]: A patient presents to the emergency department after he fell on his outstretched hand. An X-ray was performed and is given below. What is the diagnosis?



Option 1:
Colle's fracture

Option 2:
Rolando's fracture

Option 3:
Galeazzi fracture

Option 4:
Monteggia fracture