

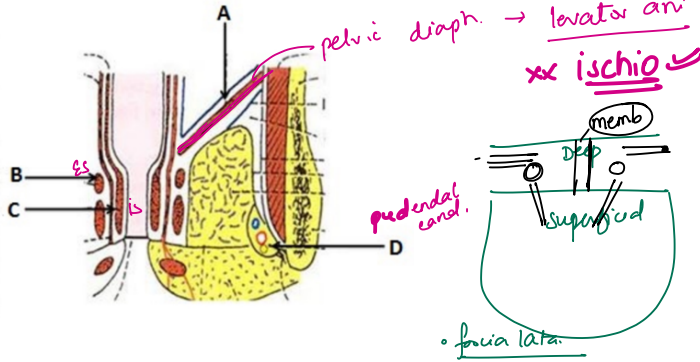


## INICET Mini GT- 4 (PYQ based)

Time: 45mins

Marks: 50

[1]: Identify the pelvic diaphragm in the picture given below.



Option 1:

A

Option 2:

B

Option 3:

C

Option 4:

D

[2]: Inferior thyroid artery is the branch of which of the following?

Option 1:

External carotid artery

Option 2: X

Internal carotid artery

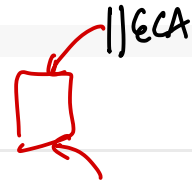
Option 3:

Thyrocervical trunk

Option 4:

Lingual artery

odd man out  
↳ STA



[3]: Which of the following sensations is not perceived by the spinal nucleus of the trigeminal nerve?

Option 1:

Temperature

Option 2:

Pain

Option 3:

Touch

Option 4: Proprioception  
↓  
mesenceph.

odd man out

[4]: Which of the following nerves is not involved in olfaction?

Option 1:

Trigeminal nerve

Option 2:

Vagus nerve

Option 3:

Glossopharyngeal nerve

Option 4:

Hypoglossal nerve

DASI  
BV motor

pure motor  
- except palatoglossus.

[5]: Which of the following is the diluting segment of the kidney?

Option 1:

PCT

Option 2: X

Collecting duct

Option 3:

Ascending thick loop of Henle

Option 4:

Descending loop of Henle

↳ ADH

↳ imp to water  
↳ fluid reach DCT: hypotonic

[6]: Myosin head detaches from actin by which of the following mechanism?

↳ relax<sup>n</sup> → ATP  
∴ NO ATP - Rigor mortis

✓ Option 1:

Binding of ATP

Option 2:

Entry of calcium into sarcoplasmic reticulum

Option 3:

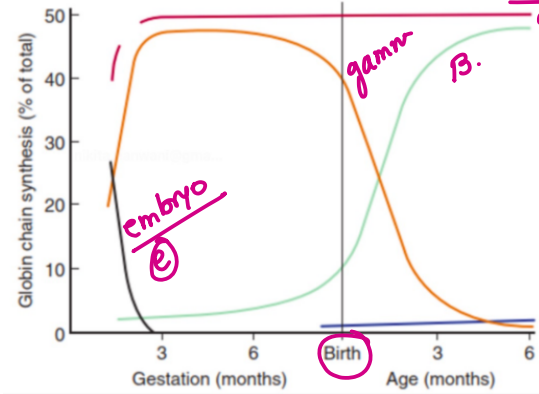
Change in troponin C configuration

Option 4:

Release of ADP and Pi

↳ power stroke

[7]: Which of the following curves represents gamma-globin chain production?



HbF  
↓  
friend → loves O<sub>2</sub>  
left shift

Option 1:

Green Curve

Option 2:

Black Curve

Option 3:

Blue Curve

✓ Option 4:

Orange curve

[8]: Which of the following events occur immediately when a person changes his/her posture from supine to standing?

Stretch on BR ↓ → ↓ BR firing

✓ Option 1:

Decrease in firing from baroreceptor

Option 2:

Vagal output to cardiac fibres increase

Option 3:

Mesenteric Vasoconstriction

Option 4:

Increase cardiac contractility

negative feedback  
to NTS (circled)

stimul<sup>n</sup> of sympathetic

⊖ PS

[9]: Which of the following enzymes are involved in gluconeogenesis?

⊙ A. Pyruvate carboxylase → OAA

B. Phosphoenol pyruvate kinase

C. Hexokinase

D. Pyruvate kinase

(E. Glucose 6 phosphatase)

↳ reverse of glycolysis  
kinase (circled)  
3 irrevers

except phosphoglyc kinase

Option 1:

A, B, and E only

✗ Option 2:

B and C only

✓ Option 3:

A and E only

Option 4:

A, B and C only

[10]: Which of the following methods can detect the alterations in DNA sequence?

1. Restriction fragment length analysis
2. Flow cytometry → CLL → CD5, 23 ⊕
3. Pyrosequencing → (synthesis), luciferase (light emission)
4. FISH  
↳ will not detect point mut<sup>n</sup>.

- Option 1: 1 and 3  
Option 2: 1, 2, and 3  
Option 3: 2, 3, and 4  
Option 4: 1, 2, and 4

[11]: Refsum disease is due to:  
Retinitis P  
fatty acid  
↳ alpha

β oxid<sup>n</sup> → mito | perox.

★ Zellweger  
VLCFA  
CHR 27

- Option 1: Absence of alpha oxidation in peroxisomes
- Option 2: Absence of beta oxidation in peroxisomes
- Option 3: Absence of alpha oxidation in lysosomes X
- Option 4: Absence of beta oxidation in lysosomes X

[12]: What would happen to the half-life and plasma concentration of a drug which follows first-order kinetics, if the dose is doubled?

amount - 0

t<sub>1/2</sub> → constant  
frac<sup>n</sup> const in  
first

- Option 1: Half-life doubles and plasma concentration remains the same
- Option 2: Half-life remains the same and plasma concentration doubles
- Option 3: Half-life and plasma concentration remains the same
- Option 4: Half life and plasma concentration doubles

[13]: Which of the following is the incorrect statement regarding clomiphene citrate?  
GnRH - Gonadotropin-releasing hormone

↳ OHSS →

- Option 1: Causes monofollicular development
- Option 2: Inhibits negative feedback on GnRH
- Option 3: Causes endometrial thinning
- Option 4: Can be used with gonadotropin T
- ↓ hypothalamus

[14]: All of the following are the uses of enteric-coated drugs except:

- Option 1: Protect the acid labile drug from gastric acidity
- Option 2: Protect the gastric mucosa from irritant effects of certain drugs
- Option 3: Prolongs the half life of the drug  
↳ const in first order.
- Option 4: Deliver drugs distal to stomach

→ PS

[15]: The response on stimulation of muscarinic receptor is:

**Option 1:**  
Erection  
↳ parit PS

**Option 2:**  
Ejaculation  
↳ spurt  
↳ symp.

**Option 3:** X  
Bronchodilation  
\* use antichol in asthma.

**Option 4:** X  
⊖ heart 2x  
Increased myocardial contractility

[16]: Match the following bacteria with the drug of choice used for each.

A. Bacteroides → anaerobic → A=B=C=  
B. MRSA → abd abscess.  
C. Hemophilus →  
D. Klebsiella ✓  
1. Vancomycin ✓  
2. Metronidazole → anaerobes  
3. Meropenem 4. Penicillin  
↳ ESBL → kleb/E.coli

↑ clinda  
↓ metro

**Option 1:** X  
A-1, B-3, C-4, D-2

**Option 2:**  
A-2, B-1, C-4, D-3

**Option 3:** X  
A-3, B-4, C-1, D-2

**Option 4:**  
A-4, B-1, C-2, D-3  
X

[17]: Which of the following staphylococcal infections is not toxin mediated?

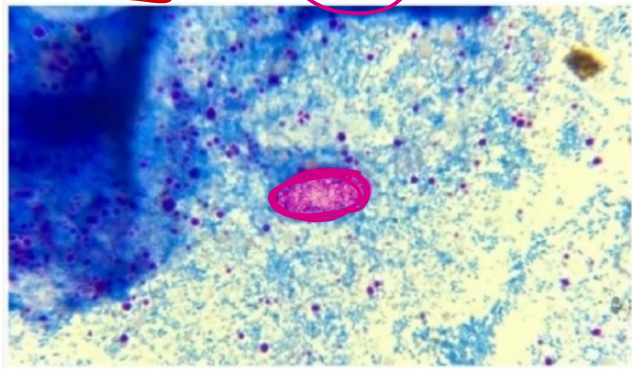
**Option 1:**  
Food poisoning  
X

**Option 2:**  
Toxic shock syndrome  
X

**Option 3:**  
Septicemia  
(bacteremia)

**Option 4:**  
Staphylococcal scalded skin syndrome  
↳ exfoliative toxin

[18]: A kinyoun positive oocyst (25 μm) was isolated from an HIV patient with diarrhea. Identify the organism.



↳ Iso.  
Dictionary

**Option 1:**  
Cystoisospora  
↳ Iso

**Option 2:**  
Cyclospora  
O

**Option 3:**  
Cryptosporidium  
O

**Option 4:**  
Microspora

[19]: Solvent/Detergent (S(D) plasma destroys lipid-enveloped viruses. So, on SD plasma transfusion, which of the following infection is likely to occur?

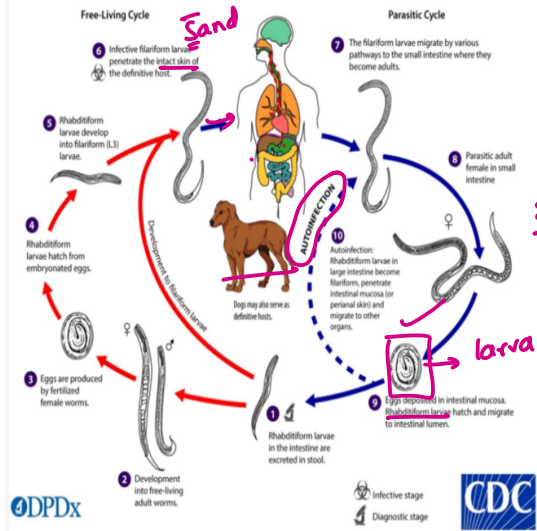
**Option 1:**  
Human Immunodeficiency Virus (HIV)

**Option 2:**  
Hepatitis A Virus (HAV)  
AE non-env

**Option 3:**  
Hepatitis B Virus (HBV)  
enveloped.

**Option 4:**  
Hepatitis C Virus (HCV)

[20]: Identify the helminth from the life cycle given below.



egg  
host  
route  
sile

strong dog

parthenogenesis

Option 1:

Ancylostoma duodenale

↳ egg

Option 2:

Strongyloides stercoralis

Option 3:

Ascaris lumbricoides

Option 4:

Enterobius vermicularis

[21]: A 32 year old female with history of back ache and polyarthralgia was investigated and found to have nuclear pattern in IF. Which of the following is the best fit in her case?

↳ scleroderma

nucleo-sclero

Option 1:

Raynaud phenomenon and sclerodactyly

Option 2:

Genital and oral painful ulcers

Option 3:

Glomerulonephritis and heart failure

Option 4:

Joint pains with nodules on skin

dsDNA : homogeneous  
CREST : centromeric

[22]: Choose the correct option regarding the storage temperatures of blood components.

platelet room temp 5 days

Option 1:

RBC 20-22°C, Platelet 2-6°C, FFP -30°C

Option 2:

RBC 2-6°C, Platelet 20-22°C, FFP -30°C

Option 3:

RBC -30°C, FFP 2-6°C, Platelet 20-22°C

Option 4:

RBC 20-22°C, FFP below -30°C, Platelet 2-6°C

refrig

frozen neg temp

[23]: Which of the following is not usually involved in the immunohistochemistry of acute lymphoblastic leukemia?

CK&O: MERO 20

Option 1:

Tdt

Option 2:

CD1a

Option 3:

CD3

Option 4:

Cytokeratine

[24]: All the following cause widening of confidence interval except?

narrow better ↑ sample size (epithelium)

Option 1:

Increase in sample size

narrow better

Option 2:

Decrease in sample size

Option 3:

Increase in variability

Option 4:

Increase in confidence level

[25]: Match the following STI kit colors and their use:

- A. Lower abdominal pain 1. Grey, Kit 1
- B. Urethral discharge 2. Green, Kit 2
- C. Non herpetic genital ulcer 3. White, Kit 3
- D. Vaginal discharge 4. Yellow, Kit 6

U - uni → ①  
 Herpetic H. Paanchu red. ⑤  
 STI

Option 1:

A-4, B-3, C-2, D-1

Option 2:

A-4, B-1, C-3, D-2

Option 3:

A-1, B-4, C-3, D-2

Option 4:

A-3, B-2, C-4, D-1

[26]: Compared to a pregnant female, a lactating female would require a higher level of nutrient supplementation for which of the following?

Option 1:

Vitamin A

Option 2:

Calcium

Option 3:

Iron

Option 4:

Folic acid

[27]: All the following tests are related to pasteurization of milk except

Option 1:

Phosphatase test  
 → enzyme protein degraded

Option 2:

Iodine test  
 → starch

Option 3:

Standard plate count  
 + coliform count  
 + nitrate

Option 4:

Methylene blue reduction test  
 → pre test pasteurization

[28]: Paradoxical undressing is seen in:

Option 1:

Heat stress

Option 2:

Voyeurism

Option 3:

Hypothermia

Option 4:

LSD overdose

[29]: Identify the plant which produces a deliriant toxin.



red  
 cocaine - sympatho  
 -uptake

Option 1:

Erythroxylum cocca

Option 2:

Datura

Option 3:

Hyoscine

Option 4:

Digitalis purpura/cannabis

[30]: A 28-year-old man presented with dry mouth, urinary retention, and constipation after consuming an unknown substance. On examination, his PR - 110bpm, and his pupils were dilated. What did he most likely consume?

ps antichol

antichol

adrenergic

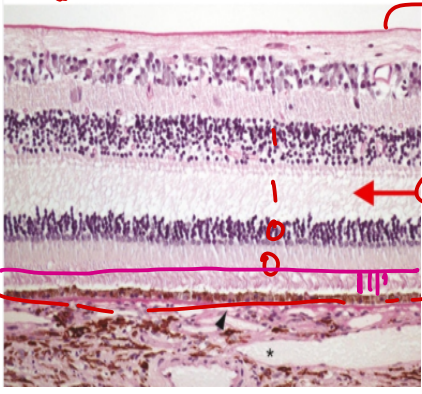
Option 1:  
Heroin ~~X~~

~~X~~ Option 2:  
Morphine OP

~~X~~ Option 3:  
Malathion  
OPC  
OP

Option 4:  
Belladonna  
atropa  
atropine  
*might have*

[31]: Identify the structure marked with red arrow



ILM

nuclear

nuclear

RPE post

~~X~~ Option 1:  
Outer limiting membrane

Option 2:  
Inner plexiform layer

Option 3:  
Outer plexiform layer

~~X~~ Option 4:  
Outer nuclear layer

[32]: Which of the following are the objective tests for the hearing?

1. BERA (Brainstem evoked response audiometry)
2. OAE (Otoacoustic emission) → neuron → objective
3. PTA (Pure tone audiometry) → subjective
4. Tympanometry

Option 1: 1, 2, and 4

Option 2:  
1,2, and 3 ~~X~~

Option 3:  
2,3, and 4 ~~X~~

Option 4:  
1,2,3, and 4 ~~X~~

[33]: Cardiac output can be determined using the following except?

Option 1:  
Thermal dilution technique

Option 2:  
Capnography ETCO2

Option 3:  
Esophageal doppler

Option 4:  
Echocardiography

[34]: A 23-year-old patient came with complaints of non-scarring alopecia in the vertex region of his head. Histological examination shows loss of hair with haemorrhage into the follicular areas and mild perinuclear lymphocytic infiltrate. What is the diagnosis?

swarm bees  
nils  
pity

Trauma

Option 1:  
Alopecia areata

Option 2:  
Telogen effluvium

Option 3:  
Tinea infection

Option 4:  
Trichotillomania

blame external

[35]: A patient says that he feels that there is something wrong with him mentally and it is because of the summer season. How much would he score on the insight scale?

E-3

- Option 1: 2
- Option 2: 3
- Option 3: 4
- Option 4: 5

psmia → prostate gallium → infect/inflam sarcoidosis

[36]: A 30-year-old woman presented with complaints of bone pain and abdominal cramps. Her family says she has a history of abnormal behavior. The consultant doctor arrived at a provisional diagnosis based on the clinical features. Which of the following would be the best investigation to arrive at a definitive diagnosis?

HyperPTH

- Option 1: MRI
- Option 2: Ultrasonogram
- Option 3: Sestamibi scan
- Option 4: CT scan

SPECT → scintigraphy

[37]: Which of the following is responsible for the elevated levels of TG and VLDL in diabetes mellitus?

insulin ↓ → anabolic

H H

HSL bkdwn ↑ TG in blood

- Option 1: Increased activity of lipoprotein lipase and decreased activity of hormone sensitive lipase
- Option 2: Increased activity of hormone sensitive lipase and decreased lipoprotein lipase activity
- Option 3: Increase in peripheral function of LDL receptors & cholesterol
- Option 4: Increased in activity of hepatic lipase

Fibrosis ↓ TG ↑ PLPC

type I (CM) microsome

[38]: Disappearance of loud S1 in mitral stenosis occurs in all except:

↓ PR - ↑ HR - loud

- Option 1: First degree heart block
- Option 2: AR
- Option 3: Calcified valve
- Option 4: Mild MS

PR ↑

Reverity: S2 - a3gpp short

↓ ↓ mobility

loud S1

[39]: A patient with ascites is found to have SAAG ≥ 1.1. All the following can be the causes except

- Option 1: Cirrhosis
- Option 2: Liver failure
- Option 3: Metastasis to liver
- Option 4: TB peritonitis

Hepatic

> 1.1

↑ portal HTN

ascites ↓ albumin in liver parench. (TAP) ↓

odd man

LEVELS OF INSIGHT

Insight is rated on a 6-point scale from one to six

- 1) Complete denial of illness
- 2) Slight awareness of being sick & needing help but denying it at the same time
- 3) Awareness of being sick but blaming it on others, on external factors, or on organic factors.
- 4) Awareness that illness is due to something unknown in the patient
- 5) Intellectual insight
- 6) True emotional insight

E-3

4/5

5/6

I

E

[40]: A patient comes to ED with fever and headache. On examination he has neck stiffness. CSF analysis was done and it shows the following findings. Most likely diagnosis is:  
Opening pressure - Increased

Proteins- Mildly increased

Glucose - Normal → viral

Lymphocytes - Increased.

Meningitis  
1st → glucose ⊕  
viral

Option 1:

TB

Option 2:

Neisseria Gonorrhoea

Option 3:

Cryptococcus

Option 4:

Coxsackie

virus

[41]: Metabolic acidosis with a normal anion gap is seen in all except

Option 1: ~~X~~  
Proximal RTA

Option 2:  
Pancreatitis

Option 3: ~~X~~  
Severe diarrhoea

Option 4:  
Salicylate poisoning

NAGMA

DiDi → di gi  
di RTA  
L fistula

resp alkalosis organic acid  
anion gap ↑  
NAGMA

[42]: Which of the following is false regarding imaging in the primary survey of a trauma patient?

Option 1:

Hemodynamically unstable patient should not be sent for CT scan

Option 2:

All patients should have chest X-ray PA view only

Option 4:

X-rays in primary survey must also be done in pregnant women

Option 3:

X-ray of the pelvis is essential in primary survey

only / never / always  
(F)

chest xx  
AP → supine

→ bleed  
xx limbs, xCT

[43]: Which parameter is the best guide to monitor the adequacy of fluid resuscitation in a patient?

Option 1:

Central venous pressure

Option 2:

Urine output

Option 3:

Blood pressure

Option 4:

Oxygen saturation

PCWP requirement

[44]: A 25-year-old pregnant women came with a history of thyroid swelling. FNAC report was suggestive of papillary carcinoma thyroid and the nodule was "cold" on scan. Which of the following will not be a treatment option for her?

Option 1:

Total thyroidectomy

Option 2:

Total thyroidectomy plus lymph node dissection

Option 3:

Radioiodine ablation of thyroid

Option 4:

Right hemithyroidectomy

→ CI in pregnancy

[45]: Identify the true statement regarding split skin and full-thickness skin grafts:

1. Primary contracture is more with split skin grafts ~~X~~
2. Secondary contracture is more with split skin grafts
3. Primary contracture is more with full-thickness grafts
4. Secondary contracture is more with full-thickness grafts

prim → full → full  
second → split

~~Option 1:~~

~~2,3~~

~~Option 2:~~

~~2,4~~

~~Option 3:~~

~~1,3~~

~~Option 4:~~

~~1,4~~

[46]: A 40-year-old woman comes with a history of postcoital bleeding and a visible mass seen in the cervix per speculum. The next step to be done:

↳ Biopsy

Option 1:

Conization

Option 2:

Cryotherapy

↳ Rx → after biopsy

Option 3:

Targeted biopsy

↳ low mass

Option 4:

Pap smear

↳ no mass seen

[47]: A 50-year-old alcoholic patient presents with a history of waxing and waning jaundice for the past 2 months. His CT examination reveals, dilatation of the common bile duct and pancreatic duct. What is the most probable diagnosis in this patient?

Double duct sign.

Option 1:

Cholangiocarcinoma

↳ CBD

~~Option 2:~~

Periampullary carcinoma

↳ both CBD PD

Option 3:

Common bile duct stone

↳ CBD

Option 4:

Head of pancreas carcinoma

↳

[48]: A pregnant woman has a fetus with Down's syndrome. Triple test done at 15-16 weeks will have

↳ Hi High

Option 1:

Low MSAFP, high hCG, low UE3

~~Option 2:~~

~~High MSAFP, low hCG, high UE3~~

~~Option 3:~~

~~Low MSAFP, high hCG, high UE3~~

~~Option 4:~~

~~High MSAFP, low hCG, low UE3~~

condiscidomy -

[49]: In fetal alcohol syndrome, which of the following is not seen?

Option 1:

Thinning of corpus callosum

Option 2:

Microcephaly

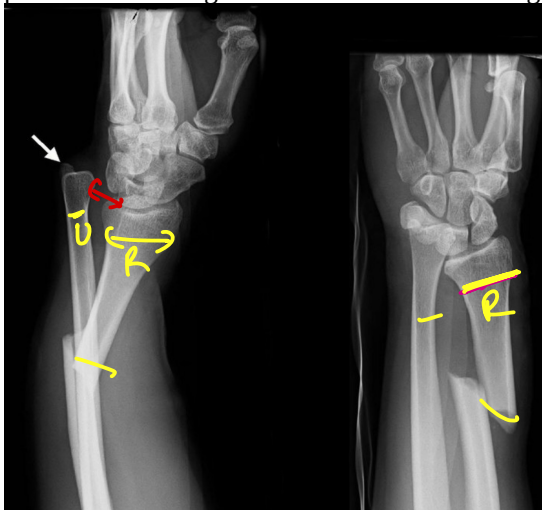
Option 3:

Holoprosencephaly

~~Option 4:~~

~~Macrocephaly~~

[50]: A patient presents to the emergency department after he fell on his outstretched hand. An X-ray was performed and is given below. What is the diagnosis?



MURCIA

Option 1:

Colle's fracture

X  
distal

~~Option 2:~~

Rolando's fracture

↳ Thumb base

~~Option 3:~~

Galeazzi fracture

↳ distal RUT  
disloc<sup>d</sup>

Option 4:

Monteggia fracture