

Surgery

1. Testicular torsion
2. Testicular vein congenital hernia
3. Medial pectoral nerve- intra op picture
4. First step in thyroid mass - thyroid profile
5. Lip image biopsy - wedge biopsy from the edge
6. Total penectomy
7. Inosculation on day 3
8. VAC pressure 120
9. Buccal graft for long structure picture
10. Nissens fundoplicatiin
11. Debridement for leprosy trophic ulcer
12. Venous ulcer on gaiters area
13. Mucous retention cyst and excision
14. Closed suction drain!

Pharmacology

15. Rifampin avoided in HIV zidovudine
16. Tesamorelin HIV lipodystrophy
17. Beta blocker is the least important treatment if HF
18. Adenosine 0.1 mg/kg rapid iv push
19. Clonidine withdrawal hypertensive crisis
20. Amytriptiline + ssri= cyproheptadine
21. Cefixime DOC for gonorrhea

Ophthalmology

22. Herbert pits image

23. IV mannitol + pilocarpine ACG

24. Leucocoria, rossete = retinoblastoma

25. Homonymous hemianopia image based

26. MRI pituitary tumor = Bitemporal hemianopia

27. Leucocoria = do surgery immediately to prevent amblyopia

28. Anterior uveitis, festooned pupil like photo

29. Episcleritis, RA (99% but not sure can be pinguecula)

ENT

30. Esophagus FB gets stuck at cricopharyngeus
31. Rinnes test - Negative in CHL
32. Otosclerosis, Caharts, Shwartz sign
33. Open rhinoplasty nose incision
34. Cotton myer grading - subglottic stenosis
35. Submucosal resection complication

Ortho

- 36. LACHMAN test
- 37. Epiphyseal plate injury long bone growth
- 38. Tibial Tuberosity lateral xray
- 39. Primary callus in fracture xray
- 40. Ewings t(11;22)
- 41. Gunstock image= supracondylar humerus

FORENSIC

42. Investigating officer orders Autopsy
43. Adipocere is saponification of fats
44. Silica is the cover for diatoms and chlorophyll
45. Entry wound Close shot because singing
burning present
46. Superfetation because 1 month given,
different cycles
47. Arsenic image, Aldrich mees line
48. Methyl ALCOHOL increases lactic acid and
Formic acid.
49. Ethylene glycol hypocalcemia
50. Doctor is protected because life saving
hysterectomy
51. Cocaine tachy, pupil dilated
52. Mifepristone + misoprostol for MTP

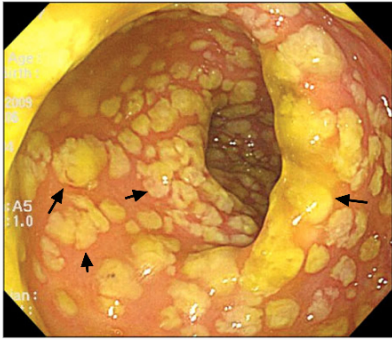
Radiology

53. Pancreatitis Xray = 2L/24 hours saline = Noncardiogenic Acute pulmonary edema
54. CT scan with thorax structures marked, black pipe with air was Trachea!
55. Lateral Xray neck was BARIUM SWALLOW (not corrosive injury)
56. Craniopharyngioma- motor oil
57. Ring enhancing large lesion - Abscess
58. You do MR spectroscopy to differentiate TB, neurocysticercosis, the Pediatric imaging Q
59. Drainage of pericardial fluid in right atrial collapse question - pericardial effusion
60. DeBakey B - only beta blockers and antihypertensive
61. Chest Xray with airfluid level = lung abscess
62. Spine CT scan = spondylolisthesis (not 100% sure on this)
63. MRCP image = choledochal cyst (again not 100% sure)
64. Arnold chiari malformation
65. Chronic SDH CT head
66. Anterior mediastinal mass with -62 Hounsfield unit is mass with Ca^{2+} and Fat
67. Glomus Tympanicum teachers saying, not sure one sir said Jugulare
68. Calcium phosphate bladder stone proteus
69. T1 suppression etc - Endometrioma ovary
70. Chronic calcific pancreatitis Xray
71. UPJ block the multiple cystic kidney appearance

Microbiology..

72. The USA return guy got Histoplasmosis (image)

73. The fatty membrane in colon photo was option C - pseudomembranous colitis



74. Ecoli O157:H7

H7 is flagella

75. Generation time- reaching max infectivity

76. Strongyloides- Malabsorption in HIV patient

77. Rotavirus(electron microscope image)/

Norwalk not sure (dams said Rota)

78. The parasite larvae with no sheath no nuclei is BANCROFTI

79. vector for splenomegaly disease is Sandfly (phlebotomus) according to dams, idk which disease it was

80. Thayer Martin medium gonorrhea

81. Catheter UTI pathogen with budding = Candida

82. Gram stain, filamentous, sinuses = Nocardia

OBS AND GYNEC ON DEMAND

83. Thick septa USG was Hydrosalpinx

84. Nugent score - Bacterial Vaginosis

85. IUCD and pregnant - gently remove

86. Elongated cervix - Fothergills

87. Forcep image - Piper's

88. Mesh is attached to Sacral promontory in prolapse surgeries

89. Soft cervix is GOODELL SIGN

90. ECV image- PRIMIGRAVIDA is not a Contraindication

91. Active herpes lesions = LSCS delivery mode of choice

92. Implantation takes how many days after fertilization = Controversial, deepiti mam said 8 days, some says 5-6 days!

93. Ovarian tumor markers- CA125, HCG, LDH, AFP

94. Rectal mucosa teared = 4th degree tear

95. 2 uterus big and small, 2 cervix mentioned = didelphys

96. Episiotomy Scar picture with endometriosis nodule

97. Why to do sterilization at isthmus- narrowest

98. Catheter photo with smooth thing coming out of vagina = myomatous polyp

99. First step after B/L block on HSG = laparoscopic chromopertubation

100. (Halfway) Serum MgSO₄ not routinely measured

101. Gross uterus image = intramural fibroid

102. At ovulation ovum is 2° oocyte with meiosis 2

ARRESTED

103. Burn Marshall technique

Anesthesia

- 104. Capnography was alveolar plateau
- 105. Halothane causes malignant hyperthermia
- 106. Sniffing position for intubation
- 107. Recovery position = pulse and breathing present, unconscious
- 108. Biers block tourniquet image
- 109. Ambu bag pressure release valve = 30-40 cm h₂o

PSM

110. Disaster - Responce - Rehab - Mitigation
111. High stationery- Early expanding - Late expanding - low stationery
112. Scurvy like Xray = copper deficiency
113. Maternal mortality = 100
114. Early Neonatal mortality= 18
115. Quarantine period = 14 days = maximum incubation period
116. Sanchol cholera vaccine - idk answer
117. PQLI = IMR and Literacy 2 things considered
118. Sapanas mascot of leprosy image
119. Most sensitive test in sanguirine, mustard oil = Paper Chromatography
120. Diphtheria controversial - Either penicillin or no intervention
121. MOTIVATION- AWARENESS- ACTION
122. Aayushman Bharat - IFA is NOT given monthly, it's weekly
123. Chi-Square
124. Longevity dividend = intervention option
125. ILR bottom most is OPV
126. De Choumant = Ventilation criteria is CO₂

Pathology

127. 22% plasma cells in bone marrow =
AMYLOID answer, bone marrow histology given
128. Abetalipoproteinemia - acanthocytosis
129. Endometroid cancer, the genes given in
question
130. PNH- gold standard - Flow cytometry
131. Malakoplakia - michaelis guttman body -
and head image
132. Hodgkin ABVP
133. Asbestos guitar like body
134. Myocardial infarction timeline (not sure
maybe 3 days or 12-24 hours)
135. Iron deficiency anemia 2 questions
Reduced transferrin saturation
136. Microcytic hypochromic was IDA
137. What can't be true after ileum resection=
microcytic anemia can't be present
138. Dengue prognostic is HEMATOCRIT
139. Men2A pheochromocytoma
140. Marfan's is Fibrillin
141. Alzheimer's Amyloid deposition
142. Phyllodes tumor histology leaflike
143. SCID - adenosine deaminase

Dermatology

144. Pemphigus vulgaris fish net immunofluorescence given

145. Endothrix was given as arthroconidia inside hair = Trichophyton

146. Tinea capitis - nonscarring alopecia in 2 siblings (not sure)

147. Acne treatment - if it was nodulocystic - isotretinoin, not sure can be minocycline Or dapsone too

Anatomy -

148. Transitional epithelium -Ureter

149. High median nerve injury 3+1/2 fingers

150. Tibialis posterior behind medial malleolus

151. Bochdalek hernia is left Posterolateral

Biochem -

152. Rotenone - NADH - complex 1

153. Competitive inhibitor graph

154. Lactase deficiency

155. Phenylketonuria - dihydropterotate reductase

156. X linked hemophilia - half guys diseases, half girls carrier

157. Hypercholesterolemia Achilles tendon xanthoma

158. Multiple myeloma electrophoresis (not sure about answer)

Psychiatry

159. Antisocial personality charming person

160. ALCOHOL withdrawal= lorazepam

161. Pseudoseizure no tongue bite = behavioural therapy

162. ADHD in adolescent = Conduct disorder

163. Body dysmorphic - controversial different faculties - one saying first behavioural therapy, other says SSRI

MEDICINE

164. Hepatitis chronic with High infectivity

165. Idiopathic pulmonary fibrosis (controversial - pulmo artery hypertension or respi failure)

166. PR interval 0.21 (contro- 1st degree or Normal)

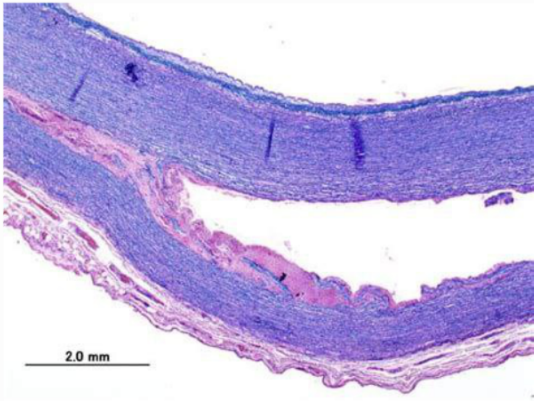
167. Valsalva in HOCM

168. Foville or Millard Gubler (not clear)

169. Thyroid antibodies also have antigen retroorbitally

170. JVP - absent a wave in AFib

171. Histology of Aortic wall (idk answer)



Physiology

172. Floculo nodular lobe

173. -70mV (Cl⁻ or K⁺)

174. Sodium iodide co transporter

175. Metabolic Acidocis why is kidney so slow?
(Idk answer)

176. Pompe's disease
177. Gonorrhoea slide direct question
178. TMP methotrexate
179. 3HP regime
180. Niacin - maize diet
181. Niacin - flushing side effect
182. Acanthamoeba keratitis contact lens
183. Ciclesonide (idk answer)
184. Phase 1 pharmac question, dosing calculation
185. Tartarate resistant acid phos
186. OK sign (flexor or opponens not sure)
187. Hybrid muscle (obturator - piriformis)
188. Azemistole - prolongs QT interval
189. Upper motor neuron - Ankle clonus
190. Aceomegaly - IGF used for screening
191. RTA type
192. Mycophenolate mofetil - PTH adenoma/
drug induced
193. Aptt for intrinsic pathway
194. Dicyclomine for spasmodic pain direct
relaxation of smooth muscle
195. Action potential - sodium entry- end plate
Potential

196. Carnitine deficiency

197.